

\* CPD: Continuing Professional Development

Gajendra Mugale, Shri Dnyaneshwar Vidyalaya, Ta. Omerga, Dist. Osmanabad

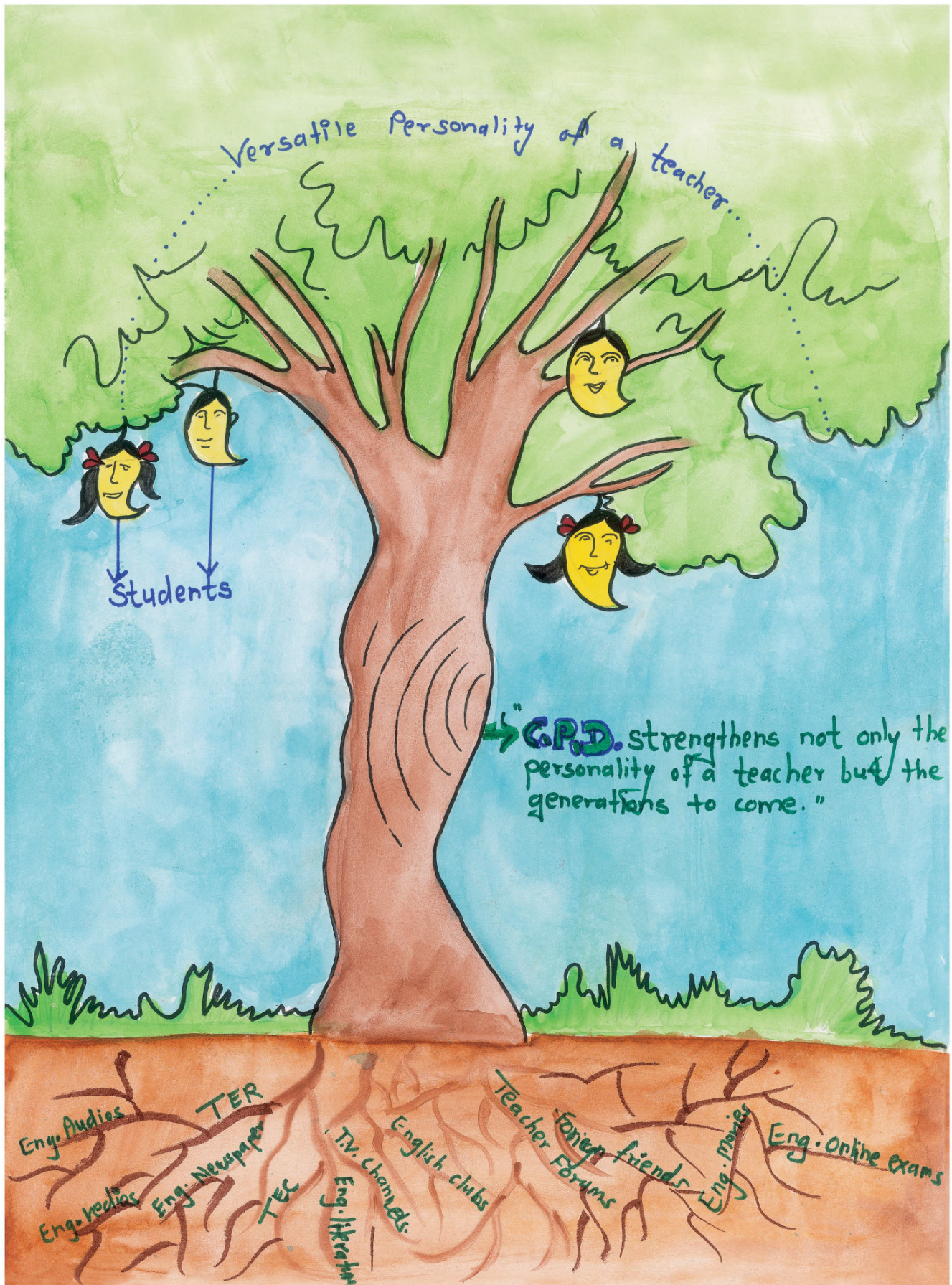
This poster was designed as a part of a competition under Maharashtra English Language Initiative for Secondary Schools (ELISS). This competition was organised as one of the Continuing Professional Development activities for Master Trainers involved in the project.

[www.britishcouncil.in/englishpartnerships](http://www.britishcouncil.in/englishpartnerships)

© The British Council, 2015  
The United Kingdom's international organisation for cultural relations and educational opportunities. We are registered in England as a charity.

f: <https://www.facebook.com/TeachEnglishInIndia>  
t: <https://twitter.com/teachEngland>





\* CPD: Continuing Professional Development

Sayalee Mahajan, Rachana High School, Nashik

This poster was designed as a part of a competition under Maharashtra English Language Initiative for Secondary Schools (ELISS). This competition was organised as one of the Continuing Professional Development activities for Master Trainers involved in the project.

[www.britishcouncil.in/englishpartnerships](http://www.britishcouncil.in/englishpartnerships)

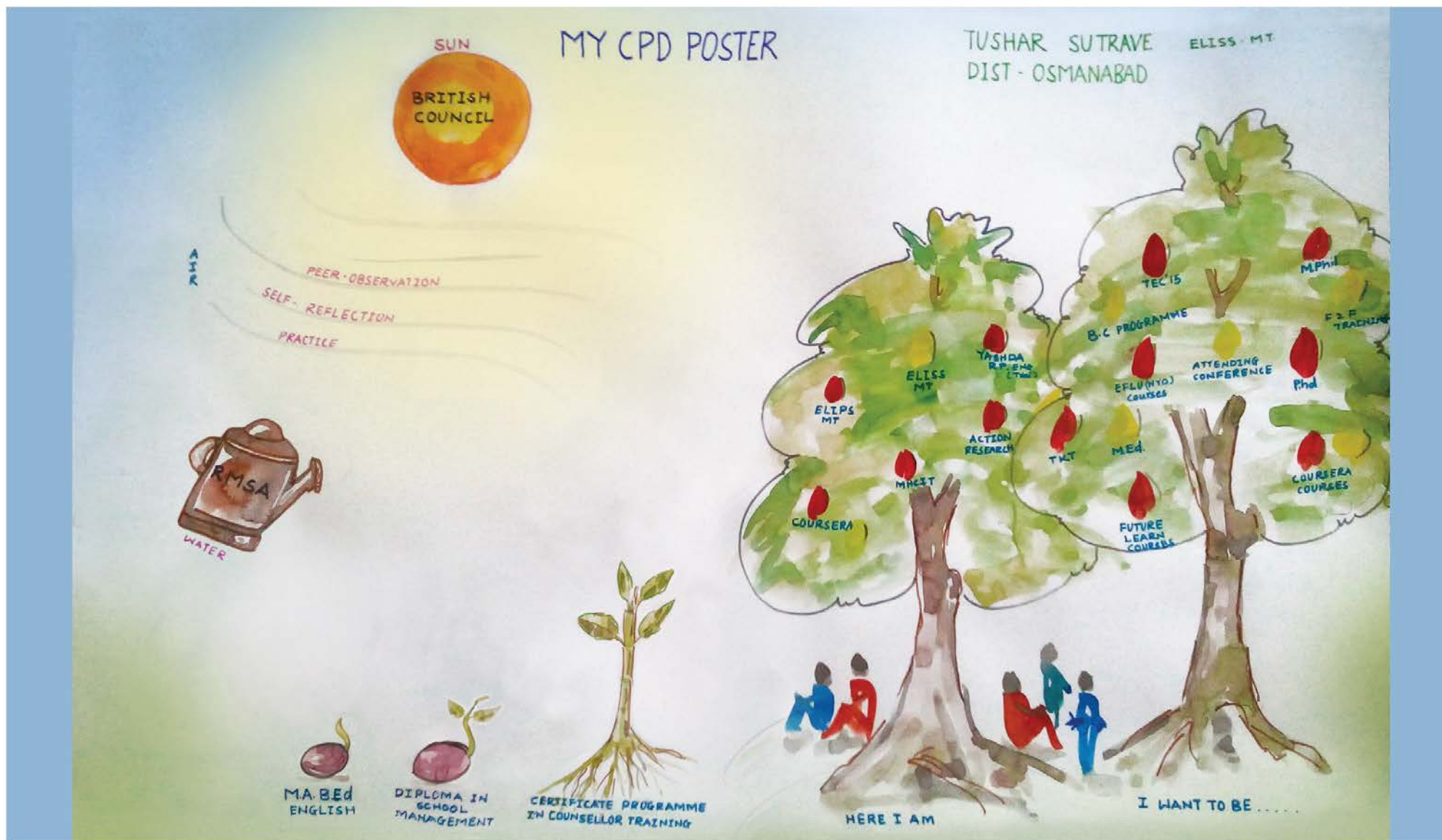
© The British Council, 2015

The United Kingdom's international organisation for cultural relations and educational opportunities. We are registered in England as a charity.

f: <https://www.facebook.com/TeachEnglishInIndia>

t: <https://twitter.com/teachEngIndia>





Tushar Sutrave, Shri Tuljabhavani Sainiki Vidyalaya, Osmanabad

This poster was designed as a part of a competition under Maharashtra English Language Initiative for Secondary Schools (ELISS). This competition was organised as one of the Continuing Professional Development activities for Master Trainers involved in the project.

[www.britishcouncil.in/englishpartnerships](http://www.britishcouncil.in/englishpartnerships)

© The British Council, 2015

The United Kingdom's international organisation for cultural relations and educational opportunities. We are registered in England as a charity.

f : <https://www.facebook.com/TeachEnglishInIndia>

t : <https://twitter.com/teachEngland>

# CONTINUING PROFESSIONAL DEVELOPMENT



Use of Language



Face to Face Training



Joining Online Forum



Online Training Course



Watching Videos



Presenting at Conference



Reflection



Teachers' Club



Practice



Reading

**Amol Kamble** New High School, Parli, Dist. Beed (MS) Email : oshoamol@gmail.com Cell : 9975935134

Amol Kamble, New High School, Parli, Dist. Beed

This poster was designed as a part of a competition under Maharashtra English Language Initiative for Secondary Schools (ELISS). This competition was organised as one of the Continuing Professional Development activities for Master Trainers involved in the project.

[www.britishcouncil.in/englishpartnerships](http://www.britishcouncil.in/englishpartnerships)

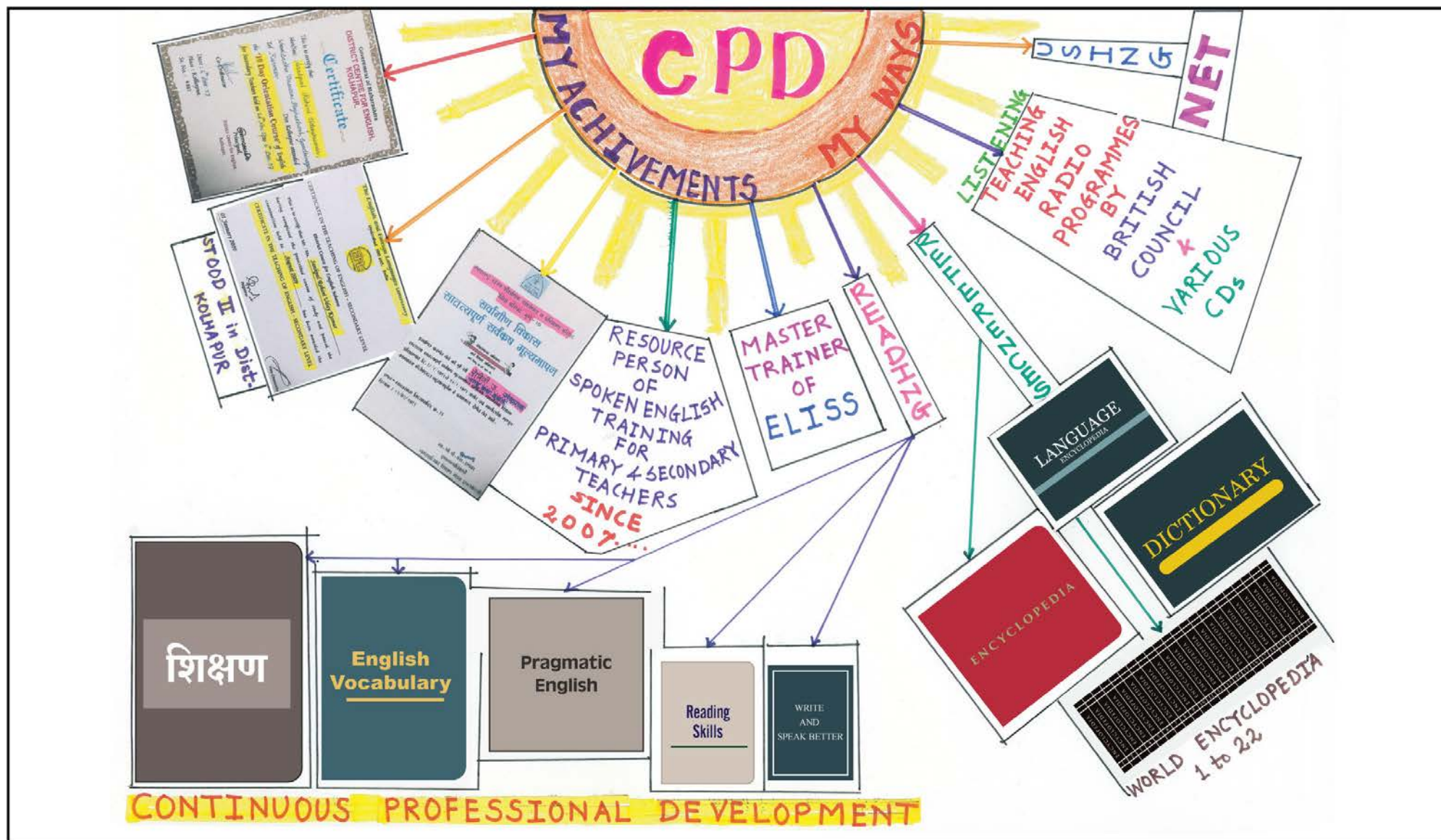
© The British Council, 2015

The United Kingdom's international organisation for cultural relations and educational opportunities. We are registered in England as a charity.

f: <https://www.facebook.com/TeachEnglishInIndia>

t: <https://twitter.com/teachEngIndia>





Rohini Sankpal, Raj. Chh. Shahu High School, Ichalkaranji, Kolhapur  
This poster was designed as a part of a competition under Maharashtra English Language Initiative for Secondary Schools (ELISS). This competition was organised as one of the Continuing Professional Development activities for Master Trainers involved in the project.

[www.britishcouncil.in/englishpartnerships](http://www.britishcouncil.in/englishpartnerships)  
© The British Council, 2015  
The United Kingdom's international organisation for cultural relations and educational opportunities. We are registered in England as a charity.

f : <https://www.facebook.com/TeachEnglishInIndia>  
t : <https://twitter.com/teachEngIndia>



## MY CPD

**I DID**

- TKT TRAINING
- TKT MODULE-1
- ELIPS
- CASCADED
- ACTION RESEARCH
- ELISS

**I WILL DO**

- ATTEND INTERNATIONAL CONFERENCE
- ATTEND TEACHER EDUCATOR CONFERENCE
- PARTICIPATE IN ELT SEMINARS
- ADMISSION FOR-Ph.D.

**Way of CPD**

▲ **CPD** - A MOVEMENT TOWARDS A RESEARCHER, TRAINER, SPEAKER, WRITER AND TEACHER EDUCATOR. **CPD** - DONE BY ME AND FOR MYSELF. ▲

**MY CPD-A LADDER FOR MY SUCCESS !!**

Sanjay Chavan, Adarsha Vidya Mandir, Chiveli, Tal. Chiplun, Dist. Ratnagiri  
This poster was designed as a part of a competition under Maharashtra English Language Initiative for Secondary Schools (ELISS). This competition was organised as one of the Continuing Professional Development activities for Master Trainers involved in the project.

[www.britishcouncil.in/englishpartnerships](http://www.britishcouncil.in/englishpartnerships)  
© The British Council, 2015  
The United Kingdom's international organisation for cultural relations and educational opportunities. We are registered in England as a charity.

f : <https://www.facebook.com/TeachEnglishInIndia>  
t : <https://twitter.com/teachEngland>



## Awareness



What is CPD?

# Poster On CPD

**Mugale Prashant Laxmikant**

Marwadi Rajasthan Vidyalay, Latur  
E-mail: prashantmugale11@gmail.com  
Mob.: 9423346739

## Understanding



After discussion with my friends,  
I came to know its meaning  
and importance

### Engaged Activities



Visiting library



Training programme



Reading practice



Peer observation



Joining a teachers' club

### Integrated Activities



Attending and presenting  
conference



Online training course  
and forum



Watching teaching videos



Presenting in teachers' club



News of students' club

### Leadership Activities



Helping others to develop



Achieving my personal goal  
MPhil Degree



Understanding and developing skills  
in professional behaviour

Prashant Mugale, Marwadi Rajasthan Vidyalay, Latur

This poster was designed as a part of a competition under Maharashtra English Language Initiative for Secondary Schools (ELISS). This competition was organised as one of the Continuing Professional Development activities for Master Trainers involved in the project.

[www.britishcouncil.in/englishpartnerships](http://www.britishcouncil.in/englishpartnerships)

© The British Council, 2015

The United Kingdom's international organisation for cultural relations and educational opportunities. We are registered in England as a charity.

f: <https://www.facebook.com/TeachEnglishInIndia>

t: <https://twitter.com/teachEngland>



Renu Dhotre, M.P. Shah English High School, Mumbai

This poster was designed as a part of a competition under Maharashtra English Language Initiative for Secondary Schools (ELISS). This competition was organised as one of the Continuing Professional Development activities for Master Trainers involved in the project.

[www.britishcouncil.in/englishpartnerships](http://www.britishcouncil.in/englishpartnerships)

© The British Council, 2015

The United Kingdom's international organisation for cultural relations and educational opportunities. We are registered in England as a charity.

f : <https://www.facebook.com/TeachEnglishInIndia>

t : <https://twitter.com/teachEngland>



## What CPD means to me

*CPD can involve a continuous improvement in our job/skills*

*Keeping ourselves up-to-date*

*Reading ELT books*

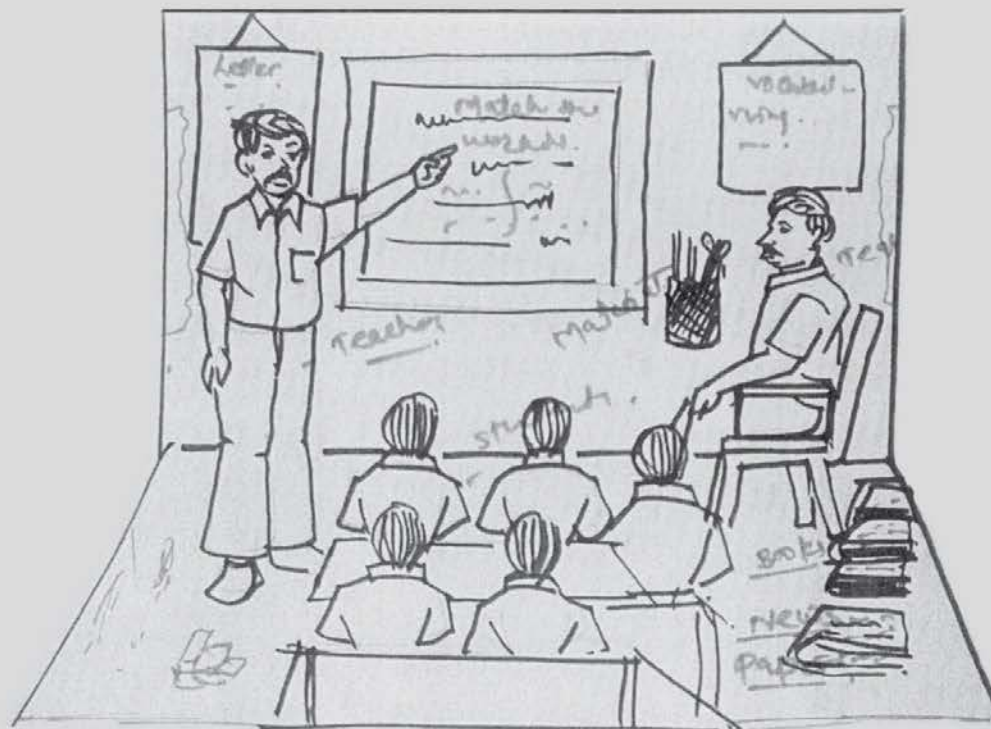
*Feedback by students and other teachers*

*Conducting variety of activities to suit learners' needs*

*Join English teachers' group on whatsapp*

*CPD competition*

*Join online courses*



## My CPD plan:

*Speak to friends and other colleagues in English*

*Listen to news in English on TV/Radio*

*Conduct Elocution competition*

*Try out Warmers/puzzles/word cards etc.*

*Develop our L/S/W/R skills*

*Try new techniques*

*Be aware of new CPD opportunities*

## Actions I have taken

*Always try to use mingle activity/pair/work /group work in my classroom*

*My learners always talk to me in English*

*Displays on the walls*

*Posters*

*Classroom corner*

*Story books*

*Encourage extensive reading*

*News papers*

*Peer teaching*

*Dialogue into practice*

*Conduct feedback sessions between peers*

*Involve other teachers in my lesson to integrate learning of other subjects.*

*Make sure learners know each other very well*

*Join English clubs*



# CONTINUING PROFESSIONAL DEVELOPMENT



Face to face training



Online courses



Joining online forums



Peer observation



Watching teaching videos

Planning lessons and courses

Understanding learners

Evaluating and assessing learning

Integrating ICT

Knowing the subject

Using inclusive practices

Using multilingual methods

Taking responsibility for professional development



Reading



Reflection



Practice



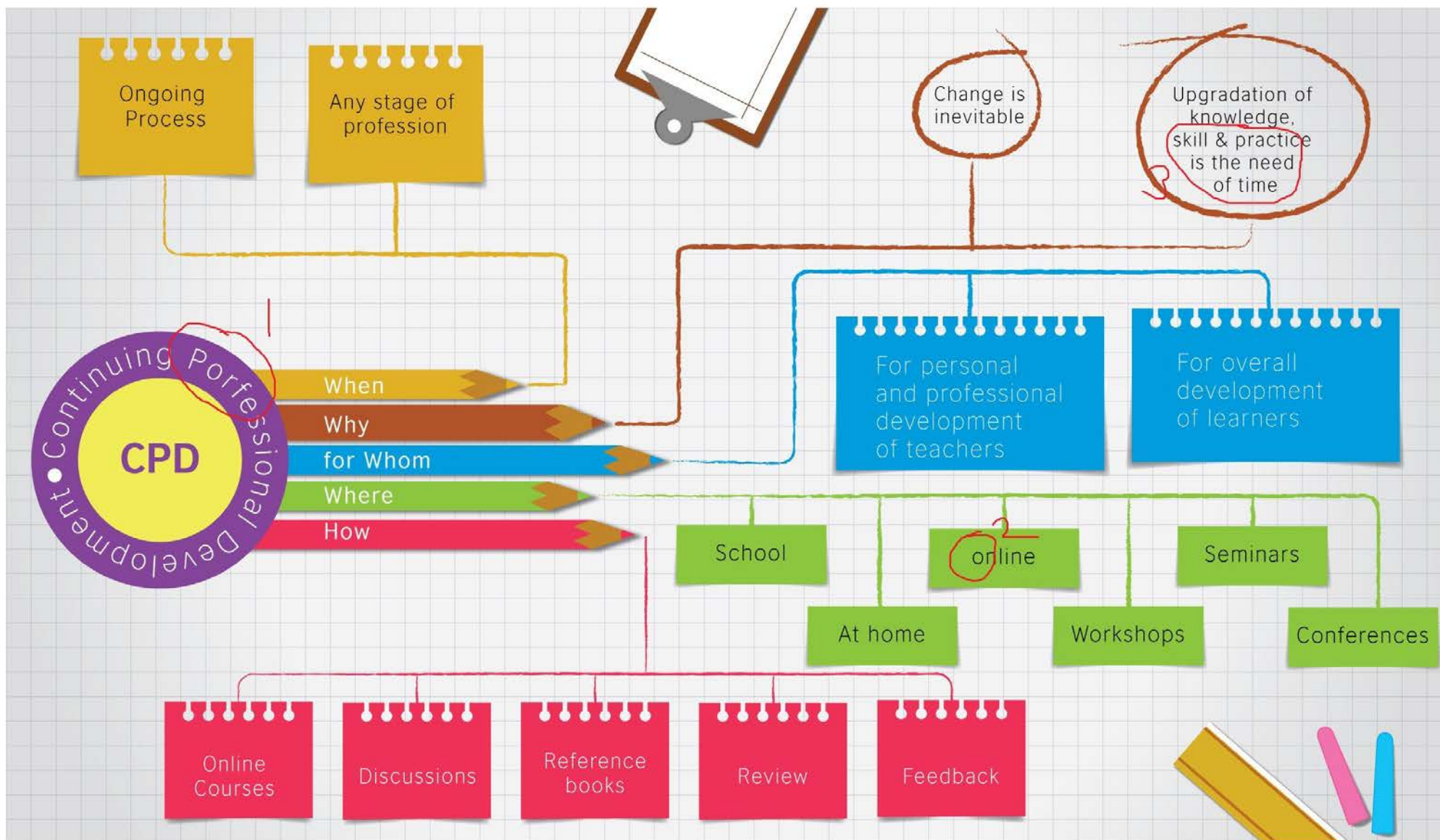
Listening to TER audio



Presenting at conference

Lahu Chavan Z.P.High School Dhondrai,Tq.Georai,Dist.Beed  
Email Id-csarthak.09@gmail.com cell No. 9422072000





Smita Pore, Kanya Shala Satara, 155 A/B Bhavani peth, Satara

This poster was designed as a part of a competition under Maharashtra English Language Initiative for Secondary Schools (ELISS). This competition was organised as one of the Continuing Professional Development activities for Master Trainers involved in the project.

[www.britishcouncil.in/englishpartnerships](http://www.britishcouncil.in/englishpartnerships)

© The British Council, 2015

The United Kingdom's international organisation for cultural relations and educational opportunities. We are registered in England as a charity.

f: <https://www.facebook.com/TeachEnglishInIndia>

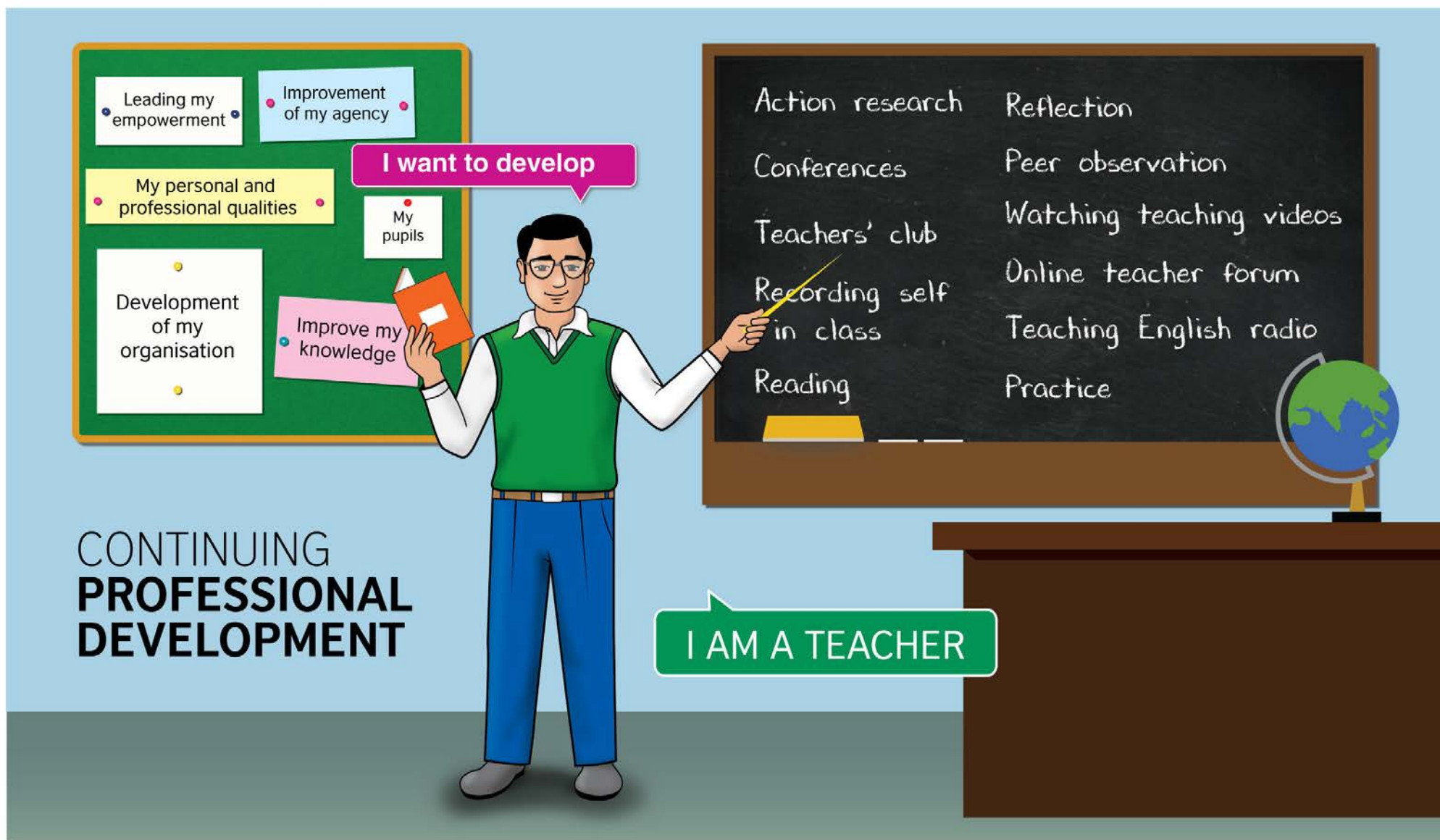
t: <https://twitter.com/teachEngIndia>



## Continuous Development



✉ : <https://twitter.com/teachEngIndia>



Harishchandra Jawale, Sudrashan Secondary Madyamik School, Latur  
This poster was designed as a part of a competition under Maharashtra English Language Initiative for Secondary Schools (ELISS). This competition was organised as one of the Continuing Professional Development activities for Master Trainers involved in the project.

[www.britishcouncil.in/englishpartnerships](http://www.britishcouncil.in/englishpartnerships)

© The British Council, 2015

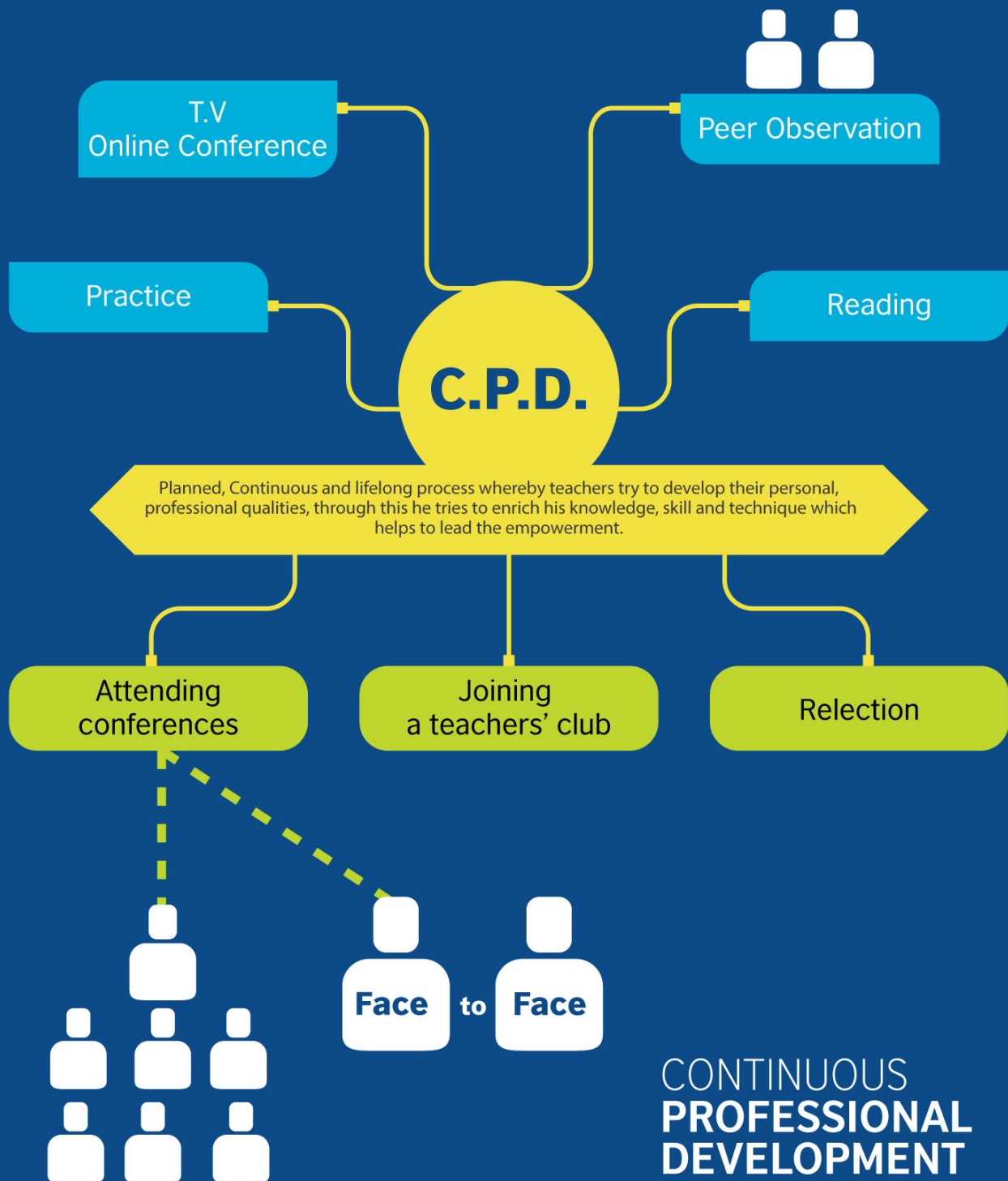
The United Kingdom's international organisation for cultural relations and educational opportunities. We are registered in England as a charity.

f: <https://www.facebook.com/TeachEnglishInIndia>

t: <https://twitter.com/teachEngland>



## Ways of empowering our self



CONTINUOUS  
**PROFESSIONAL  
DEVELOPMENT**

Sunil Biradar, Shree Lal Bahadur Shastri High School, Latur

This poster was designed as a part of a competition under Maharashtra English Language Initiative for Secondary Schools (ELISS). This competition was organised as one of the Continuing Professional Development activities for Master Trainers involved in the project.

[www.britishcouncil.in/englishpartnerships](http://www.britishcouncil.in/englishpartnerships)

© The British Council, 2015

The United Kingdom's international organisation for cultural relations and educational opportunities. We are registered in England as a charity.

f: <https://www.facebook.com/TeachEnglishInIndia>

t: <https://twitter.com/teachEngIndia>

**CPD** is a planned, continuous and lifelong process whereby teacher try to develop their personal and professional qualities and to improve their knowledge, skills and practice, leading to their empowerment the improvement to their agency and the development of their organisation and their pupils"

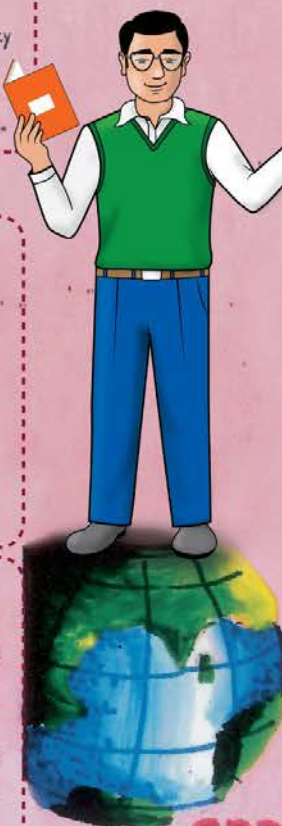
Padwad, A Dixit, K-2011.

### Need

- > Inspiration for doing something better.
- > Keeping with the changes around.
- > Rising generation gap.
- > Teachers' teaching strategy and students' learning strategy etc.
- > Are teachers' born or made?

### Models

- > Craft model :- Learning from master trainers
- > Applied science:- applying the rules and principles.
- > Reflective model:- Self-experience.



Peer observations.

Teachers' club

Head teachers' observations.

Conferences, Seminars, workshops

Visiting other institutions.

presentation of papers etc.

Research.

Top stories.

Teaching Eng Radio.

Webinars.

Reference book.

Action Research.

Record of Reading.

Record of meetings.

Using internet.

Websites.

Contribution from other sources

Being a reflective practitioner

**CPD** means:- Route to excellence!  
British council.





Minaxi Upadhyay, Smt. Surajaba Vidya Mandir School, Nashik

This poster was designed as a part of a competition under Maharashtra English Language Initiative for Secondary Schools (ELISS). This competition was organised as one of the Continuing Professional Development activities for Master Trainers involved in the project.